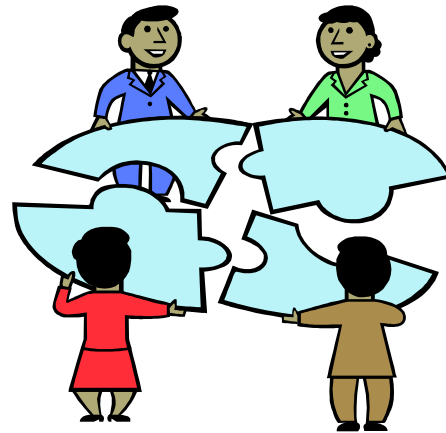


2nd Annual Conference

Putting the Pieces Together

Strategies for Suicide Prevention



Friday, December 5, 2008
8:00 AM - 4:00 PM

The Hilton Hotel
598 Broad Hollow Road (Route 110)
Melville, NY

Sponsored by
The Suicide Prevention
Committee of Long Island
and
New York State Office
of Mental Health

Featured Speaker
Kevin Hines

Kevin Hines is a national suicide prevention public speaker. He has been speaking across the country about mental health issues and suicide prevention since 2001. Kevin was properly diagnosed with bipolar disorder in high school. However, he was in denial that he had a disease. In college, Kevin became overwhelmed. Severely depressed, he attempted suicide by jumping off the Golden Gate Bridge. Very few have survived the fall.

Kevin's mission is to reach out to those suffering and let them know that with great dedication and proper treatment, they too, can have a bright future, achieving wellness and success.



Keynote Speaker
Christopher Lukas

Christopher "Kit" Lukas was born in New York City during the Great Depression. At the age of 7, soon after his mother's suicide, he was sent away to school. After college he moved to Hollywood and spent over 50 years as an award-winning writer-producer-director and cameraman in public and commercial television. His documentaries include films on end-of-life care, psychology and the arts. In 1985 Lukas and Henry M. Siden published *Silent Grief: Living in the Wake of Suicide*, the first book written for survivors of suicide. To this day it is the definitive text for those left behind. His most recent book entitled "Blue Genes" captures the devastation of his family's legacy of depression.



Honoree
Patricia A. Eddington
Suffolk County Assemblywoman

Assemblywoman Patricia A. Eddington represents the 3rd Assembly District in Suffolk County. She has devoted her professional life to education and helping others. She spent 16 years working with children and families as a social worker in the Islip School District and serves as an Associate Professor of philosophy and women's studies at Suffolk County Community College. Patricia is a NYS Licensed Clinical Social Worker. She has been a strong supporter of suicide prevention and provided a \$25,000 legislative grant last year to Response of Suffolk County for their online counseling program called Hear 2 Help.



Join us and Learn

- ◆ Which Suicide Intervention and Prevention Strategies Are Most Effective?
- ◆ How Can The Academic Community Best Respond To Suicidal Behavior?
- ◆ What Are The Mental Health Issues That Affect Emergency Workers, Veterans and Their Families?
- ◆ What Is The Risk of Suicide Among Gay, Lesbian, Bi-sexual, and Transgender (GLBT) Youth?
- ◆ How Do Different Religions View Mental Illness and Suicide?
- ◆ What Local Resource Programs Are Available For Survivors and Family Members.
- ◆ How You Can Make a Difference.

Who should attend

- ◆ 9/11 Rescue and Recovery Workers
- ◆ Emergency Responders
- ◆ Guidance Counselors
- ◆ Medical Professionals
- ◆ Military Personnel
- ◆ School Personnel
- ◆ Social Workers / Psychologists
- ◆ Suicide Survivors
- ◆ Veterans
- ◆ Anyone Who Wants To Make a Difference

Suicide Prevention Committee of Long Island

Conference Co-Chairs

Michael Arcari - Faithful Response

Meryl Cassidy - Response of Suffolk County

Conference Committee

Gwen Branch - Suffolk Community College

Dale Camhi - American Foundation for Suicide Prevention

Michael Hoffman - NYS Office of Mental Health

Cindy Pierce Lee - SCOPE Education Services

Colleen Merlo - Mental Health Assoc. in Suffolk County

Conference Schedule

8:00 - 8:45 Registration and Continental Breakfast

8:45 - 9:15 Welcome
 Michael Arcari - Co-Chairperson
 Executive Director, Faithful Response

 Meryl Cassidy - Co-Chairperson
 Executive Director, Response of
 Suffolk County

Patricia A. Eddington - Suffolk
 County Assemblywoman - 3rd Assembly
 District

9:15 - 10:00 Keynote Speaker
 Christopher "Kit" Lukas

10:00 - 10:15 Morning Break

10:15 - 11:30 Morning Session 1

A) EMDR - Carol Forgash, L.C.S.W. Individuals with complex trauma may have episodes of suicidal ideation, threat making, negative self-beliefs and isolation. These individuals are searching for a way out of their pain. These strong negative feelings interfere with information processing. EMDR is an innovative therapy that successfully alleviates clinical complaints by processing the components of the contributing distressing memories.

B) PTSD, Trauma, and Suicide Prevention - Dr. Michael Defalco, Director of Adult Services, Holliswood Hospital - This presentation will give an overview of the psychological, neurobiological, and psychosocial factors that increase the risk of suicide in survivors of trauma. The presentation will highlight trauma-related issues among soldiers and first responders. Assessment and treatment options will also be explored.

C) College Perspectives - The Truth About Suicide" Co-facilitators - Dr. Tom Tyson, Assistant Dean of Student Services/Director of Counseling, Suffolk Community College. - Michael Bombardier, PhD, a

licensed clinical psychologist and currently the Depression and Suicide Prevention Coordinator for Stony Brook University's Center for the Prevention and Outreach. The Truth About Suicide: Real Stories of Depression in College is a film which represents a recognizable picture of depression and other problems associated with suicide, as they are commonly experienced by college students and other young adults. Discussion will follow.

D) "Surviving a Suicide" - Perspectives and Resources - Beverly Feigelman, L.C.S.W. Adjunct Professor of Social Work at Adelphi University - An untimely death often brings with it myriad questions and emotions. Knowing where to turn for support and understanding is frequently the biggest obstacle. This workshop will explore the survivor's perspective and provide participant's with information on resources available through a panel discussion.

E) Safe Talk Session 1 of 2 - This training prepares you to be a suicide alert helper by following the TALK steps (Tell, Ask, Listen and Keep Safe). These steps help activate a suicide alert that connects people having thoughts of suicide with more specialized intervention care. (You must attend both morning and afternoon sessions to receive a certificate)

11:30 - 11:45 Late Morning Break

11:45 - 1:00 Afternoon Session 2

A) Veteran Issues and Services - Nancy Olsen L.C.S.W. Suicide Prevention Coordinator Northport VA Hospital. She has worked in most areas of the medical center, primarily in Mental Health and Substance abuse. Her talk will focus on Veteran-specific issues regarding suicide, including the variety of programming and mandates that arose out of the Joshua Omvig Veterans Suicide Prevention Act passed in September of 2007.

B) Wellness for Practitioners - Laura Hickey, L.C.S.W. This workshop will explore the issues a therapist faces in working with clients who attempt or complete suicide, as well as self-care methods to reduce the overwhelming sense of responsibility.

C) Creating Safer Spaces for Gay, Lesbian, Bisexual and Transgender Young People - Aoifa O'Donnell, L.C.S.W., Director of Programs, Long Island Gay and Lesbian Youth (LIGALY) - Research shows that gay, lesbian, bisexual and transgender (GLBT) youth are disproportionately more likely to attempt suicide. This workshop will explore the basics of sexual orientation and gender identity, how homophobia and transphobia can be responsible for the high risk behaviors of GLBT young people and what can be done to create safer and more supportive environments.

D) "Swallow This!" Prevention through the Arts - Kathleen Flynn-Bisson, Health Educator, Center for Prevention and Outreach, University at Stony Brook. This Award winning, live production uses drama, humor and music in a creative, powerful and efficient way to educate participants about substance use and other high risk behavior often associated with suicide. A discussion will follow the performance.

E) Safe Talk Session 2 of 2 - See workshop description under session 1.

1:00 - 2:30 Lunch and
 Featured Speaker
 Kevin Hines

2:30 - 3:45 Religious Perspectives
 Panel discussion on how different religions view mental illness and suicide.

3:45 - 4:00 Certificates of Completion
 available

Registration

Advance payment: \$55 Student: \$25
 At - the - Door: \$60
 (A limited number of scholarships are available)

Number of Participants _____ @ _____ each = \$ _____

Please make checks payable to:
 Faithful Response
 1294 Bellmore Ave
 N. Bellmore, NY 11710

Name of Registrant (s) _____

Organization: _____

Address: _____

City/State/Zip: _____

Phone: _____

E-Mail: _____

For Payments by Credit Card. Please Include The Following:

Name on Credit Card: _____

Circle one: MASTER CARD VISA

Card Number: _____

Security Code: _____

Billing Zip Code: _____ Expiration Date: _____

To register by phone or for more information,
 call Faithful Response at (516) 679-0080.

Please Circle One Workshop For Each Session

Session 1

- A - EMDR
- B - PTSD, Trauma and Suicide Prevention
- C - College Perspectives
- D - Survivors
- E - Safe Talk (Part 1)

Session 2

- A - Veteran Issues and Services
- B - Wellness for Practitioners
- C - LIGALY
- D - Swallow This
- E - Safe Talk (Part 2)